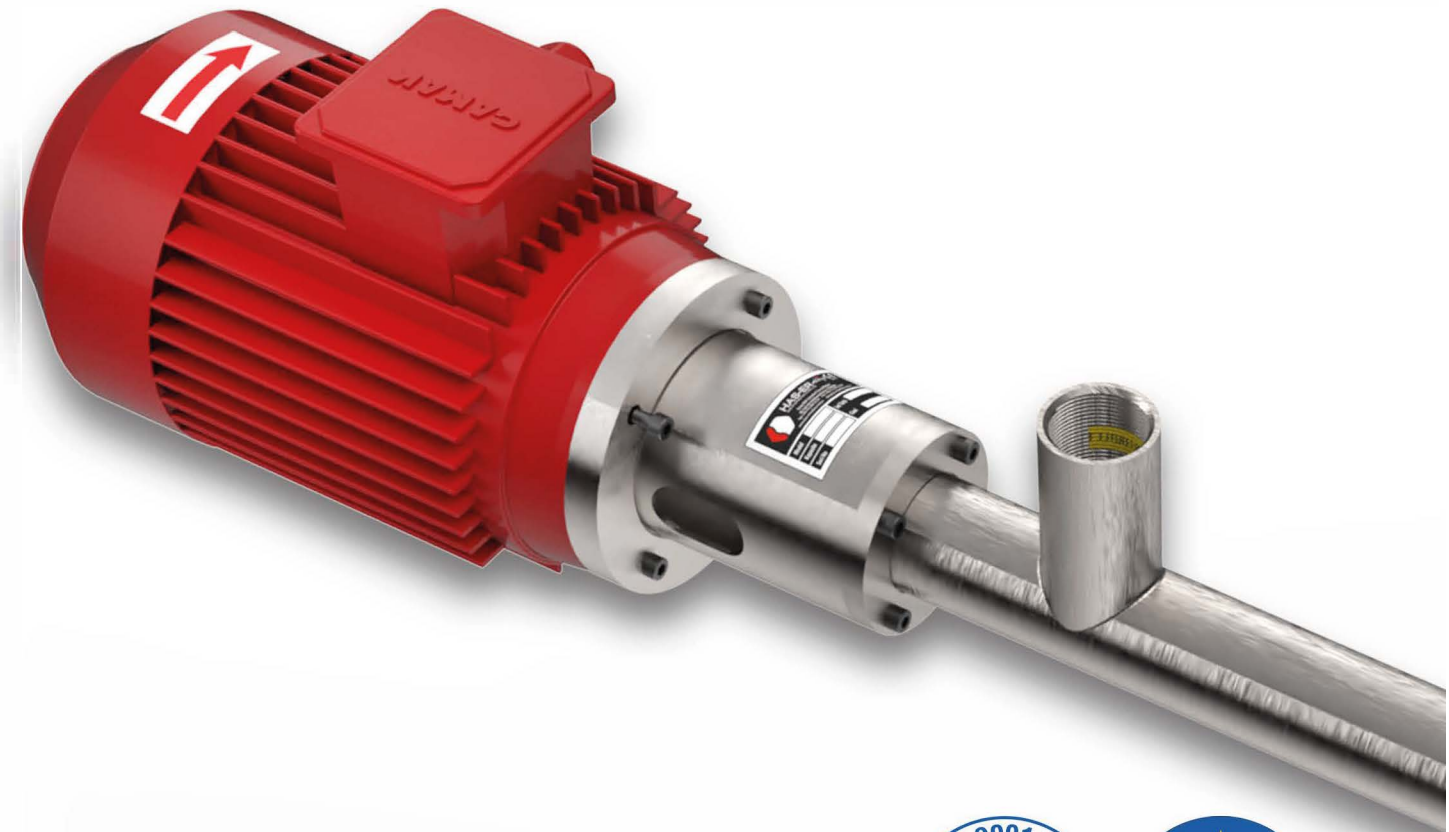


HAS-ER[®]
M O N O P U M P

Your Solution Partner in Fluid Transfer

BARREL PUMP



ООО «ТИ-СИСТЕМС» ИНЖИНИРИНГ И ПОСТАВКА ТЕХНОЛОГИЧЕСКОГО ОБОРУДОВАНИЯ
Интернет: www.tisys.ru www.tisys.kz www.tisys.by www.tesec.ru www.ти-системс.рф
Телефоны: +7 (495) 7774788, 7489626, (925) 5007155, 54, 65
Эл. почта: info@tisys.ru info@tisys.kz info@tisys.by

BARREL PUMP



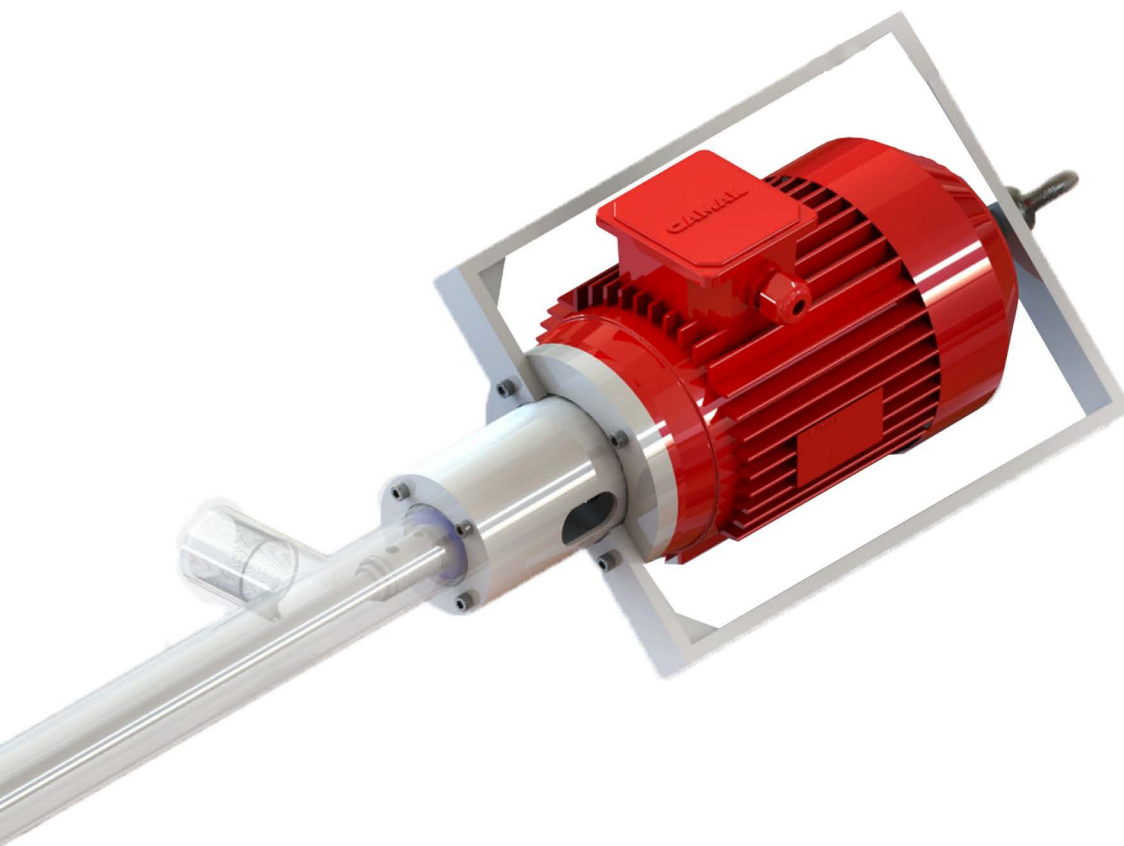
We, HAS-ER MONOPUMP, are proud to convey our professional manufacturing and international sales experience to you since 1991. We share with you all our experiences from the past to the present.

In today's conditions, in line with the changing needs of the customers in the ongoing times, we develop solutions that can respond to customers one-to-one by combining them with a unique service approach in the fastest way and quality.



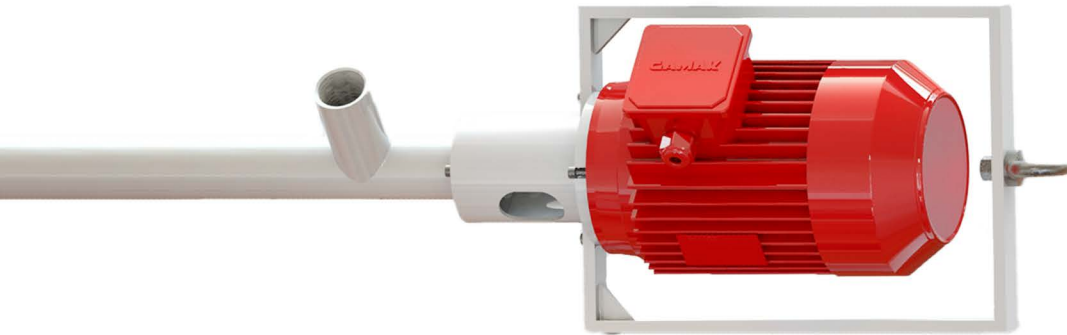
- **It is used for** easy transfer of low and high viscosity fluids from barrels, tanks, containers, etc.

- **There are pump alternatives** suitable for 0 – 1,000 cps, 1,000 – 20,000 cps, 20,000 – 100,000 cps viscosity ranges.



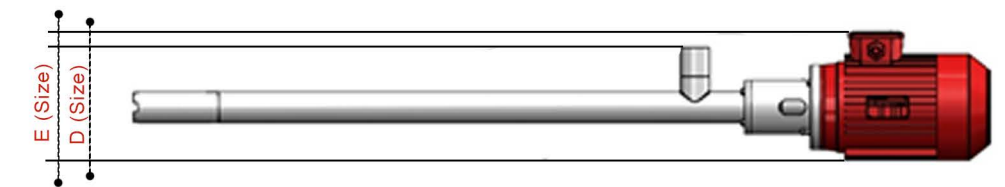
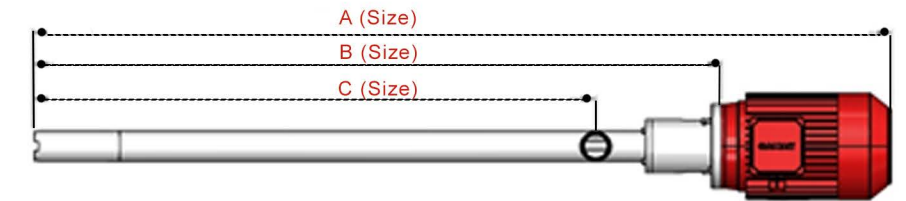
- **Owing to** AISI 316L / AISI 304L quality stainless steel models selected according to fluid type, the pump is hygienic and long-lasting.

- **It works with** selected mono pump principle depending on viscosity.



BARREL PUMP

Dimensions



- It is produced in accordance with the working conditions with its rotation speed at 900 rpm, energy supply 220V and 380V.

- The speed control device on the engine, the desired level of flow and volume control can be provided. (Max. 50Hz / Min. 20Hz)

- It is easy to use and easy to carry owing to bracket on the engine.



VP20 Type

Size	HMK-20	HMU-20	HMG-20
A	1.432 mm	1.531 mm	1.551 mm
B	1.147 mm	1.246 mm	1.266 mm
C	938 mm	938 mm	938 mm
D	187 mm	187 mm	187 mm
E	213 mm	213 mm	213 mm
Output	1 1/2" Sleeve "Standart"	1 1/2" Sleeve "Standart"	1 1/2" Sleeve "Standart"

VP30 Type

Size	HMK-30	HMU-30	HMG-30
A	1.520 mm	1.655 mm	1.655mm
B	1.236 mm	1.371mm	1.371 mm
C	938 mm	938 mm	938 mm
D	196 mm	196 mm	196 mm
E	213 mm	213 mm	213 mm
Output	2" Sleeve "Standart"	2" Sleeve "Standart"	2" Sleeve "Standart"

BARREL PUMP

Technical Values

MODEL	CAPACITY (Lt/Min)		PRESSURE (BAR)		ENGINE POWER (kW)
VPHM-K20	Max. 25Lt./mn.	Min. 10Lt./mn.	Max.4	Min.1	0,75kW 900 RPM
VPHM-U20	Max. 25Lt./mn.	Min. 10Lt./mn.	Max.10	Min.4	0,75kW 900 RPM
VPHM-G20	Max. 25Lt./mn.	Min. 15Lt./mn.	Max.4	Min.1	0,75kW 900 RPM

MODEL	CAPACITY (Lt/Min)		PRESSURE (BAR)		ENGINE POWER (kW)
VPHM-K30	Max. 75Lt./mn.	Min. 35Lt./mn.	Max.4	Min.1	1,5kW 900 RPM
VPHM-U30	Max. 75Lt./mn.	Min. 35Lt./mn.	Max.10	Min.4	1,5kW 900 RPM
VPHM-G30	Max. 140Lt./mn.	Min. 60Lt./mn.	Max.4	Min.1	1,5kW 900 RPM

